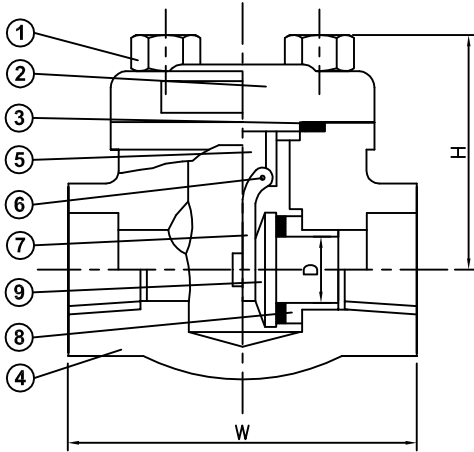


SERIES 875

CLASS 800, SWING CHECK, STANDARD PORT, THREADED ENDS & SOCKET WELD ENDS, BOLTED COVER, HALF STELLITE TRIM, API 602 DESIGEND.



875-SW



MATERIALS LIST:

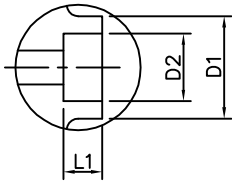
NO.	PART	SPECIFICATION
1	BOLT	ASTM A193 B7
2	COVER	ASTM A105
3	GASKET	GRAPHITE
4	BODY	ASTM A105
5	SUPPORTER	AISI 304
6	HINGE PIN	ASTM A276 410
7	HINGE	ASTM A217 CA15
8	SEAT RING	ASTM A276 410+HF
9	DISC	ASTM A743 CA40

OPTIONS: (Code: Description)

FT: Full Stellite Trim.

BB: Welded Cover.

LF2,316SS, and other steel-alloys materials are available.
Full-Stellite and other trim materials are available.



SOCKET WELD ENDS

DIMENSIONS OF SOCKET WELD ENDS

SIZE		D1		D2		L1	
IN	MM	IN	MM	IN	MM	IN	MM
1/2"	15	1.34	34	0.86	21.8	0.38	9.6
3/4"	20	1.57	40	1.07	27.1	0.50	12.7
1"	25	1.89	48	1.33	33.8	0.50	12.7
1-1/4"	32	2.52	64	1.68	42.6	0.50	12.7
1-1/2"	40	2.52	64	1.92	48.7	0.50	12.7
2"	50	3.07	78	2.41	61.1	0.63	15.9

DIMENSIONS:

SIZE		BORE	D		W		H	
IN	MM		IN	MM	IN	MM	IN	MM
1/2"	15	RP	0.39	10	3.11	79	2.40	61
3/4"	20	RP	0.54	13.8	3.62	92	2.40	61
1"	25	RP	0.71	18	4.37	111	3.07	78
1-1/4"	32	RP	0.94	24	4.72	120	3.31	84
1-1/2"	40	RP	1.14	29	4.72	120	3.98	101
2"	50	RP	1.38	36.5	5.51	140	4.72	120

DUE TO CONTINUOUS DEVELOPMENT OF OUR PRODUCTS, WE RESERVE THE RIGHT TO MODIFY OUR PRODUCT DESIGN OR CONSTRUCTION WITHOUT PRIOR NOTICE.